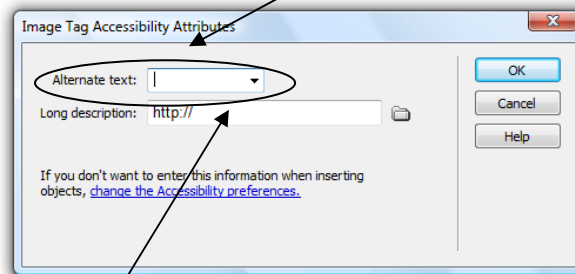


Exercise 1c: Creating Your Prototype Site

Part Three: Creating the Exercise One Page

1. Open a new page and save it as **ex1-myweb.htm** in your **exercises** folder.
2. Supply this `<title> Exercise 1: Your Full Name Web Structure, IDCC 370, Fall '09, Bentley University, Waltham, MA 02452</title>` Here, for example, is the title for my page: `<title> Exercise 1: William Buchholz Web Structure, IDCC 370, Fall '09, Bentley University, Waltham, MA 02452</title>`
3. Now you are ready to create headings, subheadings, discussion text, graphics and hyperlinks.
 - a. h1: **Your Full Name IDCC 370 Web Site Structure**
 - b. h2: **Exercise One: the Directory Structure, the Web, and Site Map**
 - c. h3: **Introduction**
 - i. Provide a paragraph or two introducing the purpose and scope of this whole exercise. Write well.
 - d. h3: **The Web Directory Model in Dreamweaver**
 - i. Supply this text: **Here is an image of the model Web directory structure (Buchholz, 2009). The Web itself consists of folders and files that all sit in a root folder (directory) on the server. The name of the root for this particular Web site is "370". If you click on the image below, you will be taken directly to the discussion of the directory structure in assignment one.**
 - ii. Go to http://cyber.bentley.edu/faculty/wb/courses/370/assignments_assign1.htm#directory. Right-click on the graphic; select **Save Picture As...** and save this as **ex1-directory.gif** in your **images** folder.
 - iii. In Dreamweaver, drag and drop your **ex1-directory.gif** from your **images** folder onto your document. When prompted (see screenshot), supply this alternative text: **Buchholz Web directory model for IDCC 370 student sites, available at** http://cyber.bentley.edu/faculty/wb/courses/370/assignments_assign1.htm#directory



Ignore the Long description box. Keep it empty.

Ignore the **Long description**; I'll explain why in class. Take a moment to examine your code view of this image operation to insure that all has gone well. We'll go through this carefully in class.

- iv. Link this graphic to the graphic located in Assignment One on the class site at http://cyber.bentley.edu/faculty/wb/courses/370/assignments_assign1.htm#directory
 - v. Immediately after the graphic, provide a concluding sentence to this part of the page.
- e. h3: **The Site Map Graphic**
- i. Download and save into your **images** folder the graphic of your site map provided to you via the class announcements page. Save the graphic as **sitemap.jpg**.
 - ii. Now insert the graphic into your page. When prompted, supply this alt text: **Site map of the Yourname IDCC 370 site.**
 - iii. Provide a sentence or two introducing the site map graphic provided to you. After the graphic, provide a discussion of the structure of your site, using these terms in your discussion: *home page*, *top-tier*, *gateway page*, *Web*, *hyperlinking*, *physical location*, *logical location*, and *navigation*. In your discussion, be sure to refer to the graphic you've supplied. These discussions vary in length, but the good ones are usually three or four paragraphs. Write well.
- f. h3: **Conclusion**: Provide a paragraph or two that concludes this whole exercise, picking up on key terms and concepts.
4. In your discussion areas for this exercise, be sure to quote directly from the PowerPoint tutorial on **Web Site Directory Structure**.
- a. Here is a long block of quoted material from the tutorial as it looks inserted into your exercise 1 page:

As Buchholz (2009b) notes in his PowerPoint tutorial, *Web Site Directory Structure*:

“You will at all times have four copies of your Web. One copy resides on your c: drive; this is your Web work area. A second copy is on your backup external medium; this is your rollback version, in its latest known-good version. Take a snapshot of your complete Web after every work session. A third copy resides on the m: drive. This is your Web staging area and should look exactly like your rollback version. The final copy is your deployed Web, which resides on the server.” (Slide 3 notes, “[4 Locations of Your Web](#),” opens in new browser window)

I agree with Buchholz that having multiple copies of the Web site is very important, because two days ago, I actually blew up a copy and had to retrieve the last good state of the Web from my USB flash drive.

Discussion continues....

- b. Here is an example of a small snippet of quoted material inserted into your discussion:

File and folder naming conventions are critically important; you must always “use short, lower-case file/folder names without any spaces whatsoever” (Buchholz, 2009b, Slide 10, “[Review of the Page Publication Process](#),” opens in new browser window). **Discussion continues....**

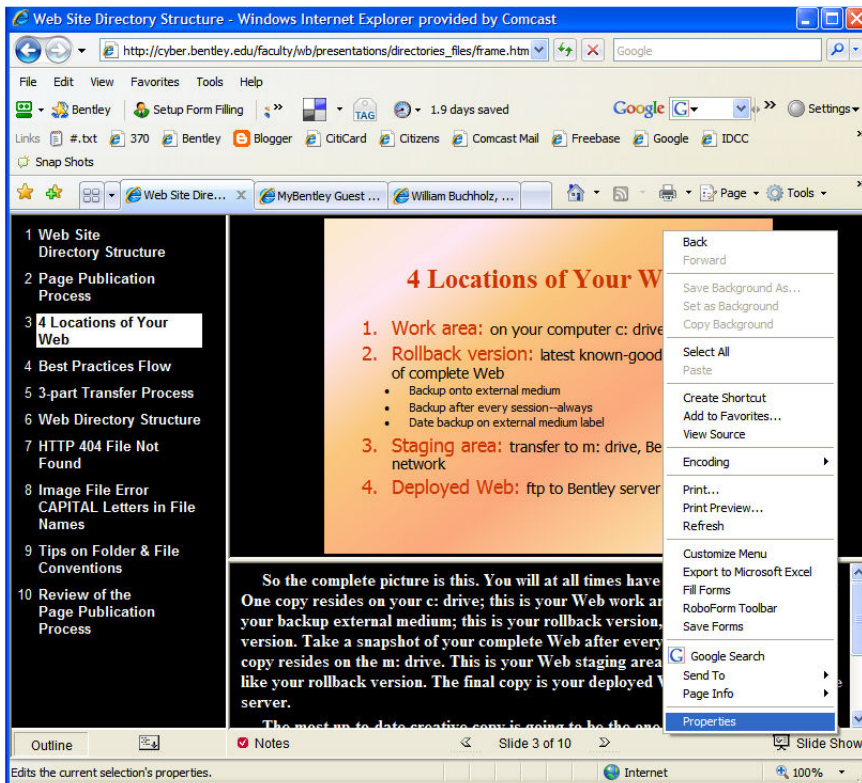
5. h3: Sources:

Buchholz, W. (2009, Fall). IDCC 370 Assignment One. Retrieved September 30, 2009, from http://cyber.bentley.edu/faculty/wb/courses/370/assignments_assign1.htm#directory.

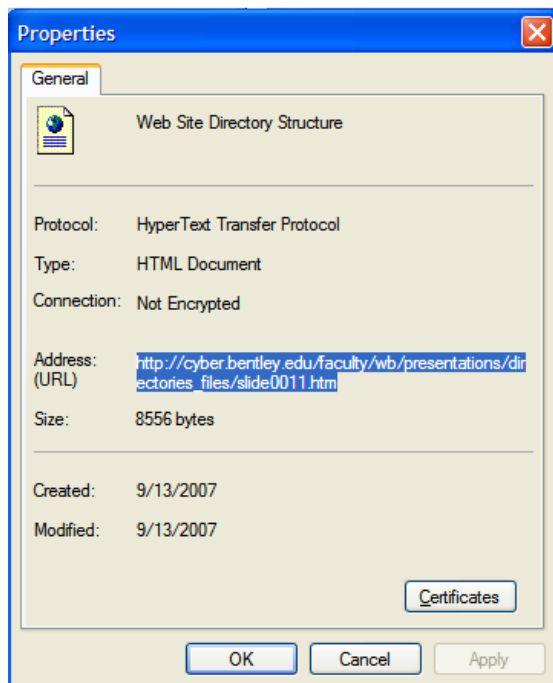
Buchholz, W. (2009b, Fall). *Web Site Directory Structure*. Retrieved September 30, 2009, from http://cyber.bentley.edu/faculty/wb/presentations/directories_files/frame.htm.

6. Here are two screenshots that show you how to gather the URL for your quoted slides.

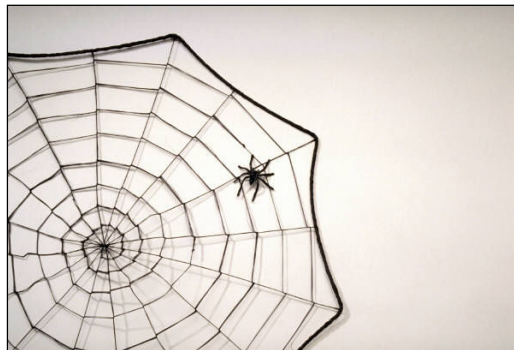
Select the slide or notes from which you want to quote. Then right click on the slide and select the properties option presented (last in the list):



Copy and paste the URL of this slide into your Dremaweaver document at the appropriate place. I will tep you through all this in class.



Congratulations! You have created the shell of your Web for Exercise One. Now be sure to supply all the documentation required throughout. Take your time—and do a good job.



Designer in Her Web